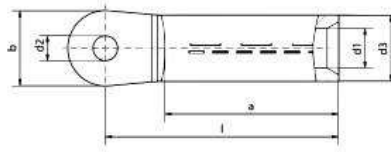


Al preskabelsko 16-500mm²



*rm = round stranded
sm = sector stranded

**se = sector solid

(Sector solid shaped conductors must be rounded with dies for round-forming.)

Anvendelse

Anvendes til påsætning på et Aluminium kabel, og kan anvendes i direkte kontakt med kobber materiale, eks. Kobber skinne.

Materiale	Al 99,5 iflg. DIN46267 part 2
Overflade	Fortinnet
Fyld	Krop med kontaktfedt



Al preskabelsko 16-500mm²

cross section mm ²		flat hole M	die code	dimensions in mm						weight 100 pcs./kg	packing unit (pcs.)	tool recommendation								
rm/sm ²	se ^{mm}			d1	d3	d2	b	l	a											
16^{mm}	25	8	12	5,8	12	8,4	20	53	30	1,34	50	APW 20 160, HHW 20 + HPW 20 161 + HPW 17 164, APW 30 + HHW 30 164	AP 10 156, HHW 10 + HPW 10 157	DW 6/70 151						
		10													10,5	1,30	50			
25	35	8	12	6,8	12	8,4	25	53	30	1,40	50				APW 20 160, HHW 20 + HPW 20 161 + HPW 17 164, APW 30 + HHW 30 164	AP 10 156, HHW 10 + HPW 10 157	DW 6/70 151			
		10																10,5	1,36	50
		12																13	1,31	50
35	50	8	14	8,0	14	8,4	25	65	42	2,03	50				APW 20 160, HHW 20 + HPW 20 161 + HPW 17 164, APW 30 + HHW 30 164	AP 10 156, HHW 10 + HPW 10 157	DW 6/70 151			
		10																10,5	1,99	50
		12																13	1,94	50
50	70	8	16	9,8	16	8,4	25	65	42	2,59	25				APW 20 160, HHW 20 + HPW 20 161 + HPW 17 164, APW 30 + HHW 30 164	AP 10 156, HHW 10 + HPW 10 157	DW 6/70 151			
		10																10,5	2,55	25
		12										13	2,48	25						
70	95	8	18	11,2	18,5	8,4	25	75	52	3,68	25	APW 20 160, HHW 20 + HPW 20 161 + HPW 17 164, APW 30 + HHW 30 164	AP 10 156, HHW 10 + HPW 10 157	DW 6/70 151						
		10													10,5	3,63	25			
		12													13	3,56	25			
95	120	8	22	13,2	22	8,4	25	81	56	5,81	10	APW 20 160, HHW 20 + HPW 20 161 + HPW 17 164, APW 30 + HHW 30 164	AP 10 156, HHW 10 + HPW 10 157	DW 6/70 151						
		10													10,5	5,75	10			
		12													13	5,66	10			
120	150	10	22	14,7	23	10,5	30	86	56	6,89	10	APW 20 160, HHW 20 + HPW 20 161 + HPW 17 164, APW 30 + HHW 30 164	AP 10 156, HHW 10 + HPW 10 157	DW 6/70 151						
		12													13	6,79	10			
		16													17	5,46	10			
150	185	10	25	16,3	25	10,5	30	90	60	8,74	10	APW 20 160, HHW 20 + HPW 20 161 + HPW 17 164, APW 30 + HHW 30 164	AP 10 156, HHW 10 + HPW 10 157	DW 6/70 151						
		12													13	8,62	10			
		16													17	8,39	10			
		20													21	8,09	10			
185	240	10	28	18,3	28,5	10,5	30	91	60	11,00	10	APW 20 160, HHW 20 + HPW 20 161 + HPW 17 164, APW 30 + HHW 30 164	AP 10 156, HHW 10 + HPW 10 157	DW 6/70 151						
		12													13	10,89	10			
		16													17	10,48	10			
		20													21	10,18	10			
240	300	10	32	21	32	10,5	38	106	70	16,24	10	APW 20 160, HHW 20 + HPW 20 161 + HPW 17 164, APW 30 + HHW 30 164	AP 10 156, HHW 10 + HPW 10 157	DW 6/70 151						
		12													13	16,08	10			
		16													17	15,76	10			
		20													21	15,35	10			



Al preskabelsko 16-500mm²

cross section mm ²		flat hole M	die code	dimensions in mm						weight 100 pcs./kg	packing unit (pcs.)	art.-no. uncoated	tool recommendation			
rm/sm*	se**			d1	d3	d2	b	l	a							
300	-	12	34	23,3	34	13	38	106	70	17,76	5	22260	HPW 17 APW 30 HHW 30 164 APW 18 + HPW 18 172			
		16				17								17,38	5	22261
		20				21								16,90	5	22262
400	-	12	38	26	38,5	13	38	116	73	25,98	5	22264				
		16				17								25,57	5	22266
		20				21								25,05	5	22268
500	-	12	44	29	44	13	44	122	79	36,04	5	22270				
		16				17								35,60	5	22272
		20				21								35,04	5	22273

